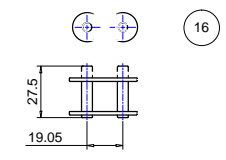
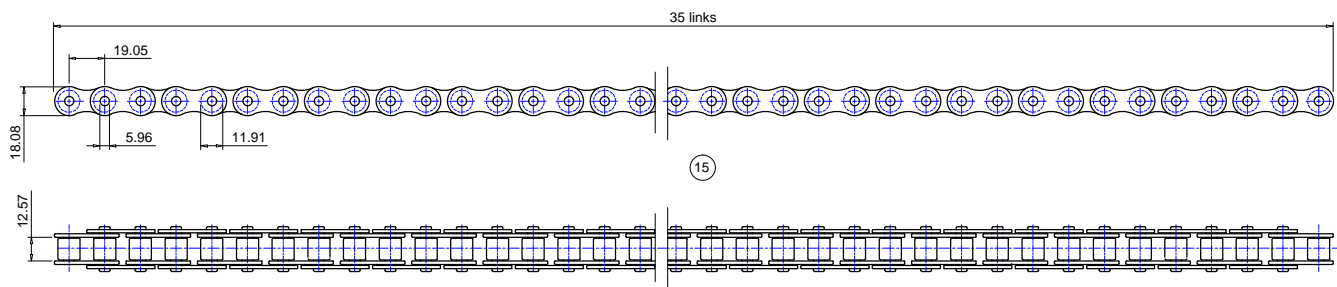
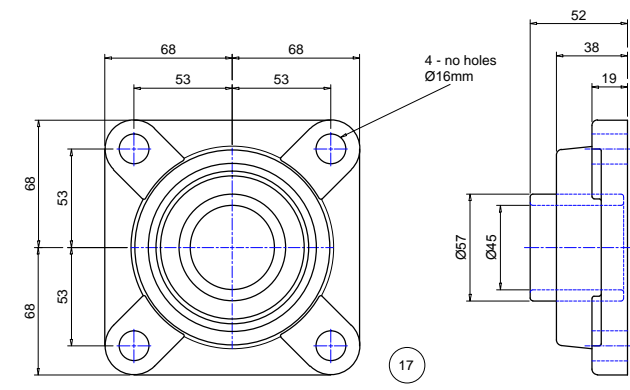
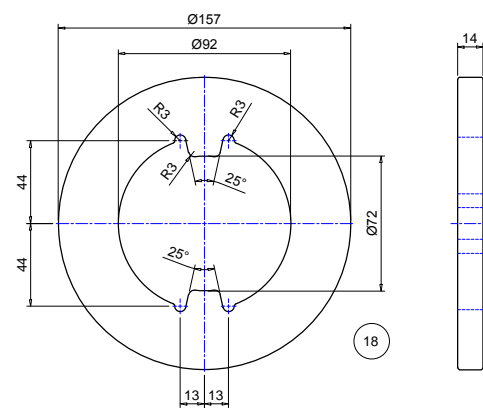
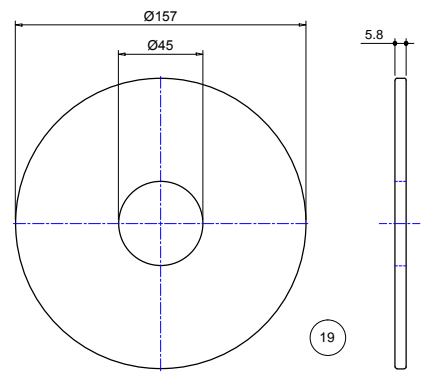


Bill of Material			
Item	Quantity	Description	Stock code
15	1	12A-1 3/4x7/16 - 35 links roller chain	
16	1	Connecting Link for 12A-1 roller chain	
17	1	45mm cast iron 4 hole fixing cartridge bearing	
18	1	Ø156mm x 14mm thk steel profiled disc	
19	2	Ø156mm x 6mm thk steel discs	
13	1	Ø45mm x 400 long steel shaft	
14	1	12mm x 8mm x 50mm long key steel	



This drawing is the property of ELLARD LTD, it may not be reproduced without the written authorization of Ellard Limited. All intellectual property rights are expressly reserved

ELLARD
 Roundthorne Industrial Estate
 Ellard House, Floats Road
 Wythenshawe, Manchester
 M23 9WB
 Tel: 0161 945 4561, e-mail: technical@ellard.co.uk

Title
**GENERAL ARRANGEMENT
 FOR BP7 (JM1000)
 (STOCK CODE 03276)**

Rev/Notes

<u>Date</u>	10/03/2022		
<u>Drawn by</u>	DE	<u>Chk'd by</u>	AP
<u>Drg #</u>	BP7 - General Arr (5)		